

# Cecilia-Workshop version 6.3.n



## *Installation Guide*

Version 2.3

2025

## **Abstract**

This document describes the installation procedure of the Cecilia-Workshop software, property of Dassault Aviation, on a Windows (10 or 11) client station.

## **Limitation on Warranties and Liability**

The information contained in this document is subject to change without prior notice and in no way constitutes an engagement by Dassault Aviation. The reproduction or transmittal of any part of this document in any form, by any means (including electronic, mechanical, photocopy and recording), for any other purpose than the personal use of the person making the copy is strictly prohibited without the written consent of Dassault Aviation.

No statement contained in this document, including statements regarding capacity, suitability for use, or performance of products, shall be considered a warranty by Dassault Aviation for any purpose or give rise to any liability by Dassault Aviation.

In no event will Dassault Aviation be liable for any incidental, indirect, special or consequential damages (including lost profits) arising out of or relating to this document or the information contained in it, even if Dassault Aviation has been advised, knew or should have known of the possibility of such damages.

Copyright © 2019 - 2025 Dassault Aviation, All rights reserved.

# *Table of Contents*

<b>1. Minimal configuration .....</b>	<b>4</b>
1.1. Hardware minimal configuration .....	4
1.2. Software minimal configuration .....	4
<b>2. Database used by Cecilia-Workshop .....</b>	<b>5</b>
2.1. Database generality .....	5
2.2. Installation on an ORACLE database .....	5
2.3. Installation on an PostgreSQL database .....	5
2.4. Installation with a H2 file database .....	6
<b>3. Cecilia-Workshop launch .....</b>	<b>7</b>
3.1. Initial database selection .....	7
3.2. Licenses management .....	9
3.3. Current database selection .....	9

# 1. Minimal configuration

## 1.1. Hardware minimal configuration

The Cecilia-Workshop tool is available for any PC platform with at least:

- Intel Core i5 or AMD Ryzen 5 processor;
- 8 GB RAM;
- 1 GB available hard disk space;
- DirectX 11 graphics device;
- 1920x1080 screen resolution (2560x1440 recommended).



The minimal configuration is required for a comfortable and efficient use of Cecilia, in a construction mode for a MBSA model or for a Fault Tree. The computation part (sequences, cuts and probabilities), especially for large models or large trees, may require a much higher configuration. For more information, contact the software publisher: [cecilia@satodev.fr](mailto:cecilia@satodev.fr).

## 1.2. Software minimal configuration

The Cecilia-Workshop tool is available in the following working environments:

- Windows 10 or Windows 11 operating system;
- DirectX 12 drivers or higher;
- OpenJDK 17 or equivalent.

## 2. Database used by Cecilia-Workshop

### 2.1. Database generality

The installation of Cecilia-Workshop software requires an access to a database.

Cecilia-Workshop manages in the current version:

- a native access to OracleDB database or PostgreSQL database 11, 12 or 13 (network);
- a native access to H2 database (local).

Creation, update process and connection process to these databases are specific to the type of database installed.

### 2.2. Installation on an ORACLE database

The installation of Cecilia-Workshop requires the availability for the user of an open base authority on which one can connect and install the database. You should refer to ORACLE documentation for more information in order to the create an ORACLE database instance.

Instance name must begin with a letter and must contain only alphanumeric and underscore characters ([A-Za-z][A-Za-z0-9\_]\*). The number of characters must be between 3 and 20.

This database instance comes from:

- either a previous version of Cecilia-Workshop

The database schema has been fully modified since the 6.0 version of Cecilia-Workshop. In order to retrieve data from an older version, you can:

- either use the application import/export functionalities: from a previous version, let us export elements of previous database with **File/Export** function. It will generate an `Export.exp` file. Then you have to import data in new database with **File/Import(Ocas-V5: \*.exp)** function.
  - or use the data migration kit from 5.1 to 6.0 version placed in `database/Oracle/Migration51to60` directory (in `Cecilia-6.3.n-xxx-Portable-Win64/Cecilia` directory). For more explanations, please contact the support: [cecilia@satodev.fr](mailto:cecilia@satodev.fr).
- or from a new instance creation

The database installation must be done before software installation by a database administrator.

SQL scripts allowing database creation (`Create.sql` and `Insert.sql`) are available in `database/Oracle/Creation` directory (in `Cecilia-6.3.n-xxx-Portable-Win64/Cecilia` directory).

Moreover, ORACLE user account used during installation must have the CREATE PROCEDURE rights.

### 2.3. Installation on an PostgreSQL database

The installation of Cecilia-Workshop requires the availability for the user of an open base authority on which one can connect and install the database. You should refer to PostgreSQL documentation for more information in order to the create a PostgreSQL database instance.

Instance name must begin with a letter and must contain only alphanumeric and underscore characters ([A-Za-z][A-Za-z0-9\_]\*). The number of characters must be between 3 and 20.

This database instance comes from a new instance creation. The database installation must be done before software installation by a database administrator.

SQL scripts allowing database creation (`Create.sql` and `Insert.sql`) are available in `database/PostgreSQL/Creation` directory (in `Cecilia-6.3.n-xxx-Portable-Win64/Cecilia` directory).

Moreover, PostgreSQL user account used during installation (creation or upgrade) must have the CREATE PROCEDURE rights.



If you want to migrate from a database type to another one (for example MySQL to PostgreSQL), you can use the `Cecilia-DBTransfer.bat` file placed at the root of the installation directory. For more explanations, please contact the support: [cecilia@satodev.fr](mailto:cecilia@satodev.fr).

## 2.4. Installation with a H2 file database

The H2 database allows to store all the data in a file (with the extension `.mv.db`).

Creation of a new H2 file (and thus a new database) is made directly when Cecilia-Workshop is launched.



If you use Cecilia-Workshop in a previous version (5.n), H2 databases are not compatible. It is possible to update these H2 databases. For more explanations, please contact the support: [cecilia@satodev.fr](mailto:cecilia@satodev.fr).

### 3. Cecilia-Workshop launch

Cecilia-Workshop works with a portable archive which embeds all necessary files.

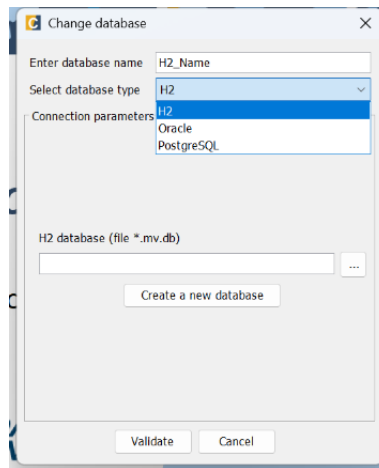
Once you have downloaded the archive from a CD-ROM, from an usb key or from the suitable website (<https://satodev.com/shop/>), you have to unzip it on your computer. You will obtain a directory called Cecilia-6.3.n-xxx-Portable-Win64/Cecilia where "xxx" depends on your version of Cecilia-Workshop.



To launch Cecilia-Workshop application, double-click on **Cecilia.exe** located in the Cecilia-6.3.n-xxx-Portable-Win64/Cecilia directory. Cecilia-Workshop launcher enables to select database for software.

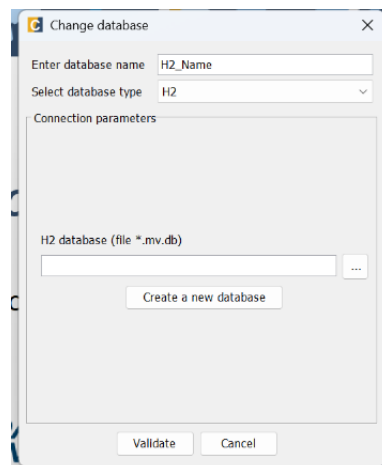
#### 3.1. Initial database selection

When you launch the application for the first time, the database is not chosen. Before doing anything, you must specify the database that will be used, thanks to the **Change database** window. The default database type is H2 but you have access to a list of choices:



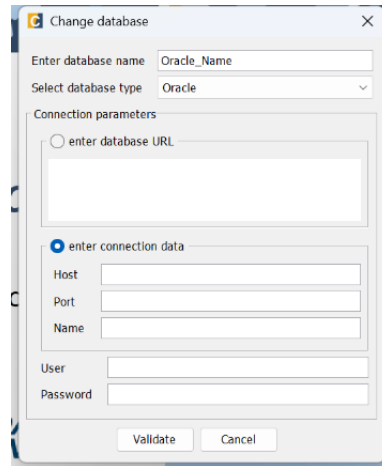
You can choose the database type between:

- **H2:**



In this case, you have to specify the name of the database and the place of the H2 file (\*.mv.db). You can also create a new H2 file specific to Cecilia-Workshop with the button **Create new database**.

- **Oracle:**

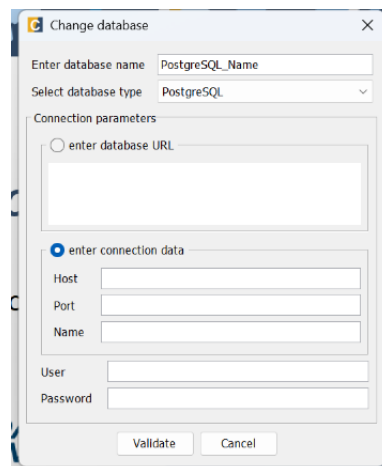
The screenshot shows a 'Change database' dialog box. At the top, there's a title bar with a close button. Below it, 'Enter database name' has a text field with 'Oracle\_Name'. 'Select database type' is a dropdown menu showing 'Oracle'. Under 'Connection parameters', there are two radio buttons: 'enter database URL' (unselected) and 'enter connection data' (selected). The 'enter connection data' section contains fields for 'Host', 'Port', 'Name', 'User', and 'Password'. At the bottom are 'Validate' and 'Cancel' buttons.

In this case, you have to specify the name of the database and the connection parameters:

- **Host:** Server hosting the database (including the DNS tree structure).
- **Port:** Connection port to the database.
- **Base:** Name of the database instance.
- **Login:** Connection login to the database.
- **Password:** Login password.

For experienced users, it is also possible to directly enter the database connection URL instead of the parameters fields. The syntax of an URL is as follows: **Host:Port@Base**.

- **PostgreSQL:**

The screenshot shows a 'Change database' dialog box for PostgreSQL. 'Enter database name' has a text field with 'PostgreSQL\_Name'. 'Select database type' is a dropdown menu showing 'PostgreSQL'. Under 'Connection parameters', the 'enter connection data' radio button is selected. The fields for 'Host', 'Port', 'Name', 'User', and 'Password' are present. 'Validate' and 'Cancel' buttons are at the bottom.

The connection parameters are identical to the connection parameters of an Oracle database.

When user clicks on **Validate** button, the connection to the database is tested. In case of incorrect parameters (inaccessible server, unknown user...), error messages may appear.

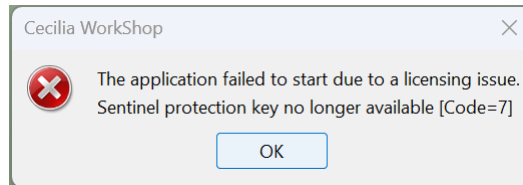
In case of problems, please contact the support: [cecilia@satodev.fr](mailto:cecilia@satodev.fr).



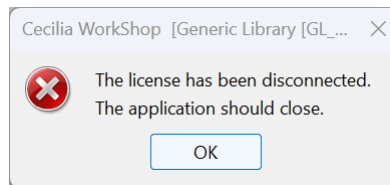
### 3.2. Licenses management

Cecilia-Workshop is protected with licenses. In case of mismatch with the software version, the period of validity or the hardware identification, error messages may appear.

For the commercial version, with the Thales Sentinel Licensing solution, if the dongle is missing (no USB dongle or loss of the link with the license server) or if the license is out of date, the following message is displayed at the software launch:



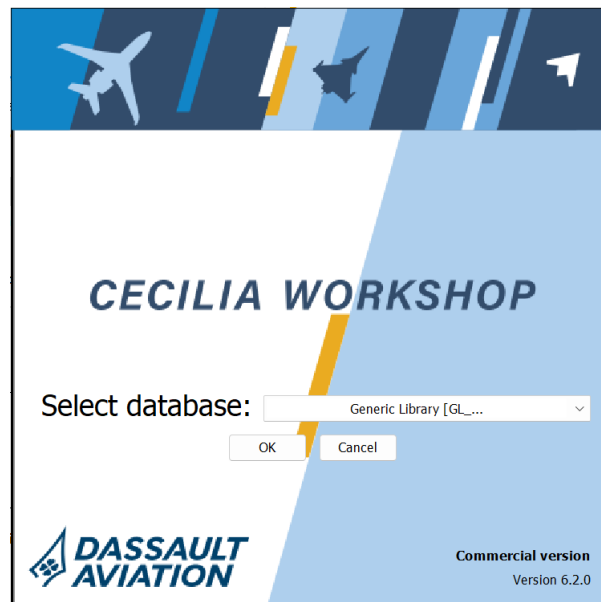
If the dongle is missing while using the software (sudden removal of the USB dongle or sudden loss of the link with the license server), the following message is displayed:



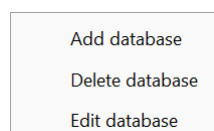
In case of persistent problems, please contact the support: [cecilia@satodev.fr](mailto:cecilia@satodev.fr).

### 3.3. Current database selection

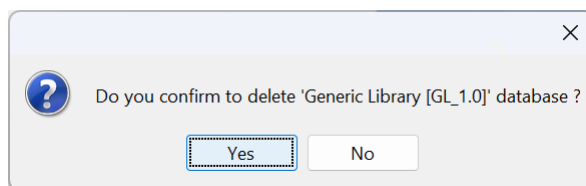
Once database connection is done, the **Select database** window appears. Thanks to a drop-down list, you can select the database that will be used for Cecilia-Workshop launching.



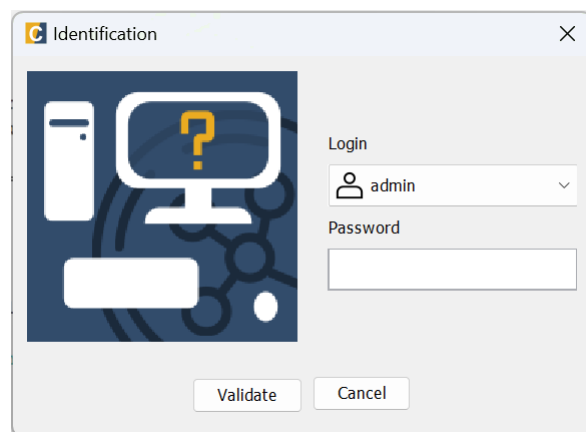
It is possible to add, to delete or to edit a database with a right click in the drop-down list.



If you choose to add or to edit a database, you will come back to the classical **Change database** window. If you choose to delete a database, a confirmation message will appear:



After the database selection, the **Identification** window is displayed in order to identify the user.



When you create a new database, there is only one user, the administrator (default login: **admin**, default password: **admin**). The users management is done through the `Cecilia-Admin.exe` application. See the dedicated user manual.